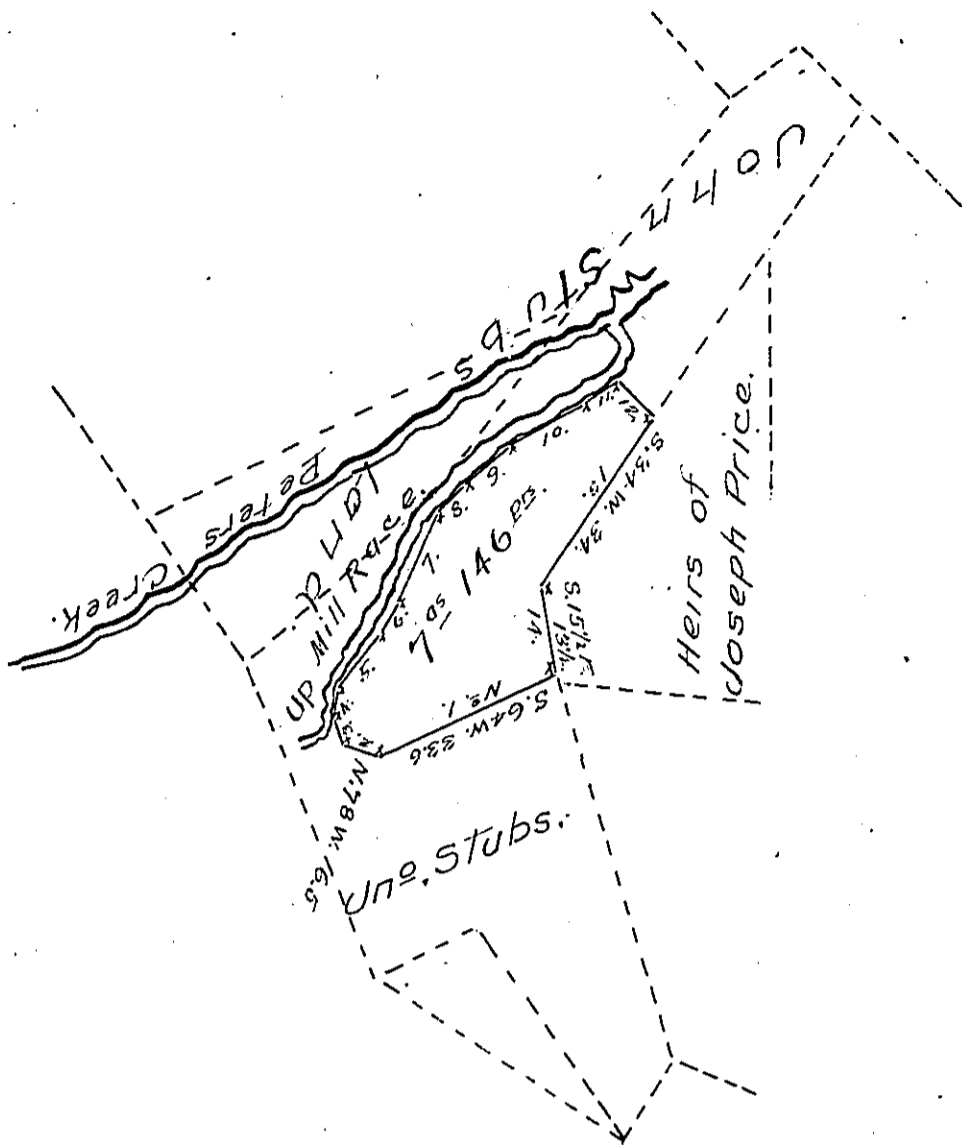


FORM NO. 1.

Courses & distance.

- No. 1 - S. 64 W. 33.6
- No. 2 - N. 78 W. 6.5
- thence up the
Mill Race
- No. 3 - N. 15 W. 5.
- No. 4 - N. 11 E. 5.
- No. 5 - N. 38 E. 12.
- No. 6 - N. 20 E. 6.
- No. 7 - N. 26 E. 16.
- No. 8 - N. 43 E. 6.
- No. 9 - N. 51 E. 8.
- No. 10 - N. 61 E. 14.
- No. 11 - N. 57 E. 6.
- No. 12 - S. 63 E. 9.
- No. 13 - S. 34 W. 34.
- No. 14 - S. 15 1/2 E. 13.5



The above Draught made by the black lines contains Seven acres One Hundred and forty six perches and the allowance of Six per cent for Roads &c. Situated in Little Britain Township Lancaster County, and is included by Dotted lines in a larger survey of ~~79~~ 35 acs. 152 perches made the 19th of June 1809 by Jacob Hibshman D.S. and Returned to the Surveyor General's Office and therein Represents this to be parts of several Tracts of Land Granted to Henry Parson in pursuance of several Warrants granted to him. One of them dated March 20th 1743 and one dated Feb^y 10th 1756 (which I believe to be part of the first) the dotted lines Represent the other parts of said larger survey Surveyed for the Heirs of Joseph Price Dec'd this 25th day of March A.D. 1842.

To Jacob Sallade Esq^e }
Surveyor General - Penn^a }

By James Calwell D.S.

IN TESTIMONY that the above is a copy of the original remaining on file in the Department of Internal Affairs of Pennsylvania, made conformably to an Act of Assembly approved the 16th day of February, 1833, I have hereunto set my Hand and caused the Seal of said Department to be affixed at Harrisburg, this fourteenth day of June 1906.

James D. Brown
Secretary of Internal Affairs.